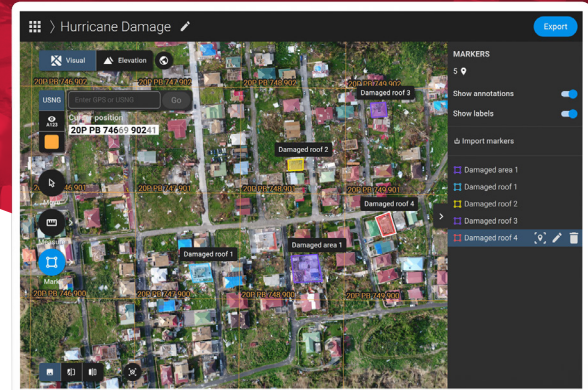




PIX4Dreact



2D fast-mapping software for emergency response and public safety

Reliable situational awareness in complex situations to make better and faster decisions



Fast

PIX4Dreact creates 2D maps from aerial imagery in minutes. Because when every second counts, up-to-date and reliable information is of utmost importance to teams on the ground.



Easy to use

Simple and intuitive to use, even in complex and stressful situations. PIX4Dreact is developed with public safety and humanitarian aid professionals to meet their unique challenges.



Lightweight and robust

Lightweight enough to work on a mid-range laptop in the field. PIX4Dreact doesn't rely on an internet connection or the cloud for processing.



Easy Sharing

Share your data via PIX4D-cloud, as PDF report and in industry standard formats.

Applications

The map you need when you need it



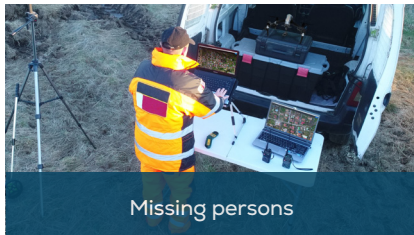
Earthquakes



Flooding



Fires



Missing persons



Tactical planning



Human displacement

	Features	Advantages
INPUTS	RGB images	Import nadir images from standard RGB sensors in JPEG format
	Pre-processed maps	Import orthomosaics already processed in other Pix4D products (import as geoTIFF)
	Markers	Create or import markers (point, line, polygon) and overlay them in your project (import as GeoJSON, KML or Shapefile)
TOOLS AND FUNCTIONS	Easy to use interface	An easy to use and intuitive interface, developed with public safety and humanitarian aid professionals
	Lightweight and robust	Lightweight to work on a mid-range computer in the field without requiring an internet connection or the cloud for processing
	Fast mapping	Generate high-resolution 2D maps from aerial images in minutes, offline and locally processed
	GPU enhanced fast mapping	Improve processing speeds significantly when suitable GPU is available compared to standard CPU
	US National Grid	US National Grid map overlay with the ability to jump to a specific cell by either USNG code or GPS coordinates
	Marker tool	Place point, line, and area markers in different colors to identify and export points of interest
	Measurement tool	Quickly measure distances and areas for accurate tactical and mission planning. Save as markers when needed to make the measurements permanent
	Comparison tool	Compare different maps side-by-side using split or double screen
	PDF report generator	Share your maps with all project stakeholders for seamless collaboration using the PDF report export tool
	Export tool	Export projects or individual layers with adjustable control for image size and format to your computer for further use
	Lightweight and robust	Lightweight to work on a mid-range computer in the field. Pix4Dreact doesn't rely on an internet connection or the cloud for processing
Share to PIX4Dcloud	Upload PIX4Dreact outputs (orthomosaic, surface model) directly to PIX4Dcloud for sharing	

HARDWARE SPECS



CPU: Intel® Core™ i3 or AMD Phenom processor (or faster recommended)



HD: Approximately 4GB HDD free space



RAM: 4GB RAM (or 8GB recommended)



GPU: NVIDIA GeForce 2 GB RAM (or better recommended)



OS: Windows 10 macOS Catalina (10.15) or above

Try for free at pix4d.com/react