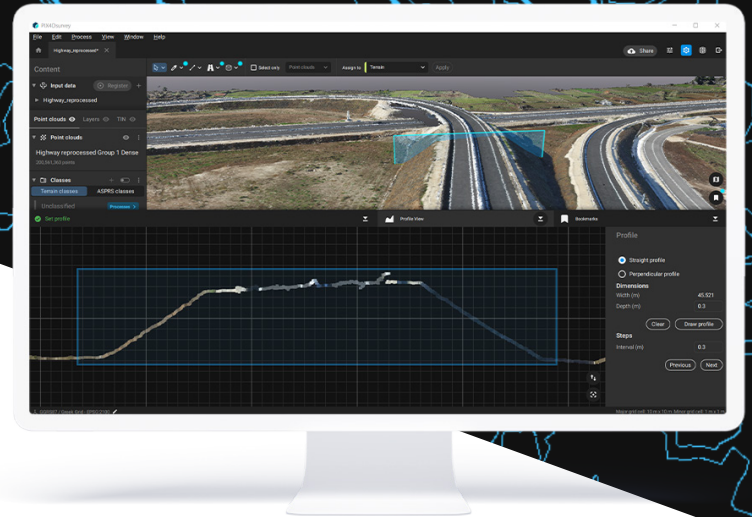




PIX4Dsurvey



# Bridge the gap between photogrammetry and CAD

Extract only the most relevant information to speed up and simplify your surveying workflows



## Vectorize anything

Use the combined power of images and point clouds to extract key elements from photogrammetry, laser scanning or LiDAR data. Survey curbs, building footprints, walls, catenary curves and more.



## Time-saving benefit

Work 50% faster when you vectorize from point clouds and verify in images, while the Smart Grid saves 1,000s of clicks creating spot elevations.



## CAD ready

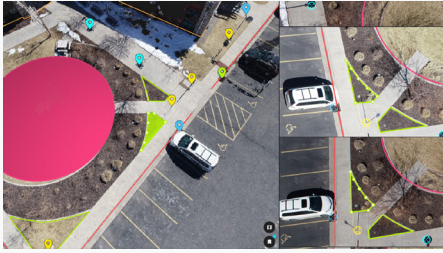
Include layers and properties for a smooth transition to CAD or GIS and reduce file size when exporting your projects as vector files.

Access the original images and 3D point clouds simultaneously and survey even complex objects such as catenaries



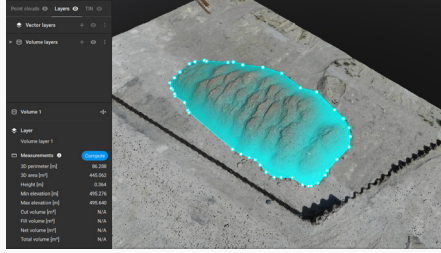
PIX4D

# Extract key elements in 3D



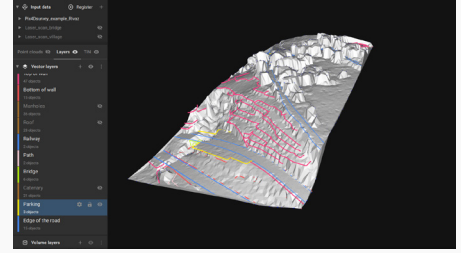
## Built-in vectorization tools

Vectorize your project using points, polylines, polygons and catenary curves with just a few clicks.



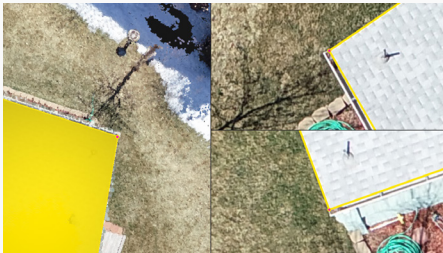
## Volume measurements and reports

Measure the volume of any object and detect stockpiles with simple steps. Export a detailed report with inventories and images to analyze your results and share your findings.



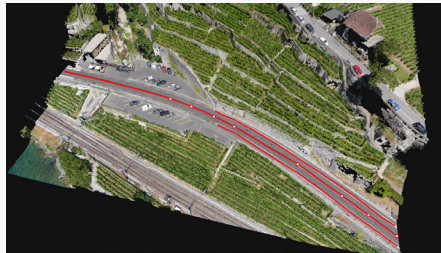
## Surfaces creation

Model the ground with a TIN from points and breaklines to represent the topography of your project. Automate the creation of spot elevations and allow drastic simplification of the number of point cloud points.



## 2D and 3D editing

Move beyond photogrammetry, yet still work with Pix4D's rayCloud to access the original images and 3D point clouds simultaneously. Vectorize in 3D, edit in 2D. Survey complex objects only visible in images. Use color selection to pick a point and search in a defined radius for points of a similar color.



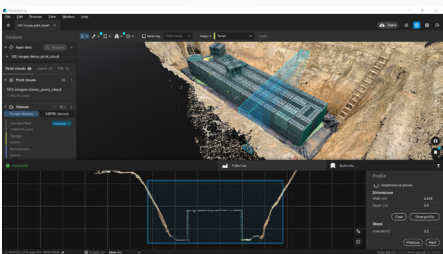
## Assisted road marking

With road marking you can vectorize line-type road markings faster and with less manual effort. You only need to click twice to show the beginning and the direction of the line, the rest of the line is vectorized automatically.



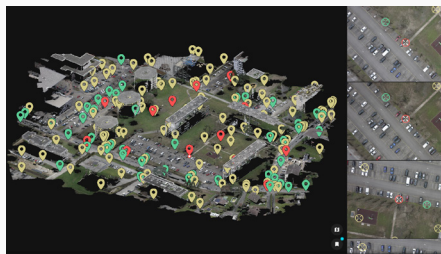
## Roof detection

The tool allows for the automatic detection of roof surfaces and creates a polygon for every roof element selected. Save time, get measurements, and export to CAD for analysis with just a few clicks.



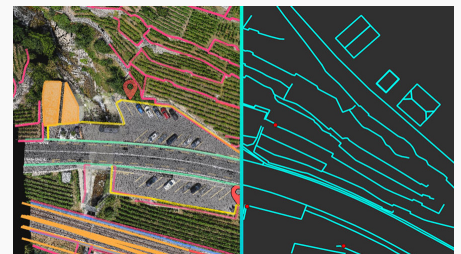
## Profiles and sections

Get accurate data on elevation changes with the profiles and sections workflow. Draw a straight profile or use a polyline as a guide, use the reference grid to re-scale while zooming in, and move in steps along the profile to see different sections of the point cloud.



## Automated feature extraction

Save time and effort with advanced automation: PIX4Dsurvey can automatically find manholes, drains, and poles in images and create markers for every object that can be exported in multiple formats to CAD.



## Easy export

Every surveyed object can be assigned to a layer and edited. Layers can be exported separately or together for a smooth transition to your preferred CAD or GIS software.

  available for Windows & macOS

Try for free at [pix4d.com/survey](https://pix4d.com/survey)